



 leapfrog® | ENERGY

Understand the complexities of the subsurface with Leapfrog Energy

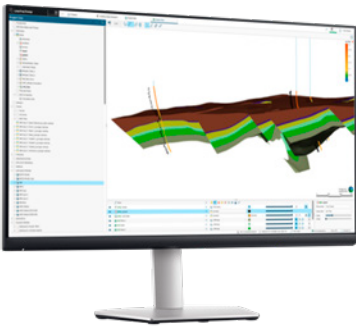
Powerful geomodelling technology for an industry in transition

Intuitive workflows, rapid data processing, and visualisation tools designed for energy experts allowing you to spend time building and analysing robust 3D conceptual models.

Tools and workflows tailored for subsurface professionals

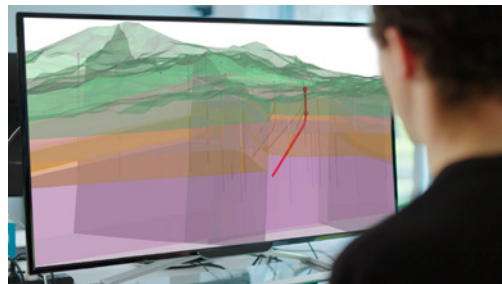
Leapfrog Energy is an intuitive, workflow-based 3D subsurface modelling software that enables you to build and refine models – fast. With over 30 years supporting the energy industry across the Seequent portfolio, this powerful technology streamlines your workflows and reduces risk to meet energy industry needs.

Make intelligent decisions about your project with workflows for well targeting, ground modelling, basin and play screening, and reservoir geoscience in a single 3D model. Leapfrog Energy's user-friendly tools and processes streamline data and empower collaboration, so you can.



Accelerate Reconnaissance and QA Workflows

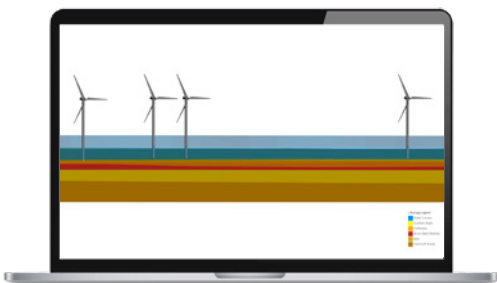
Rapidly build and analyse robust 3D conceptual models from multidisciplinary data. Take sparse well, geophysical and legacy data and build robust 3D conceptual models accelerating high grading workflows for prospects or plays. Make confident decisions on well targeting and during drilling operations.



Optimise well planning and targeting

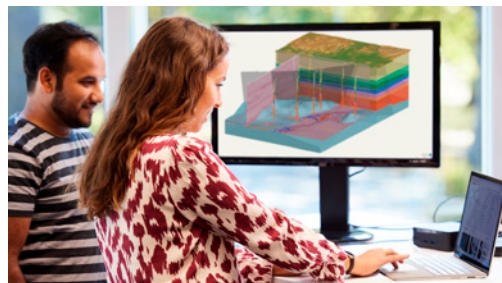
Make confident decisions on well targeting and during drilling operations. Rapidly build and test well trajectories and prognoses in 3D based on your subsurface models, ensuring you're always working with the latest information.

Add new data or make changes to a model to dynamically update all dependent models. Gain insights to change the trajectory of wells as you drill them as soon as the latest data becomes available.



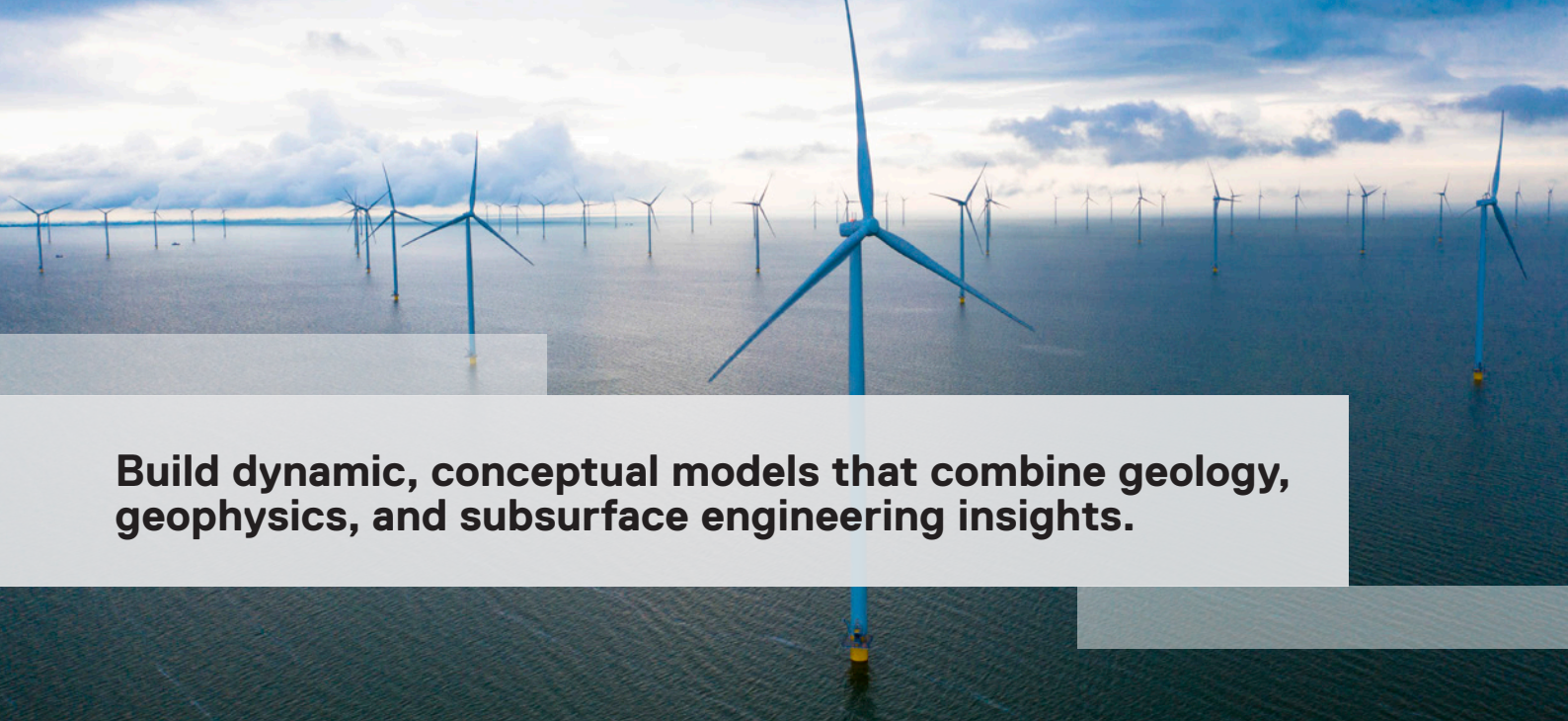
Reduce risk in complex offshore environments

Understand and communicate the complete picture of the subsurface with powerful 2D and 3D visualisations. Influence foundation design or location for turbines utilising geophysical, geological and geotechnical data.



Eliminate Silos

Unite geology, flow, and numerical models to create a continuous workflow between teams. Bring all geoscience data into a single environment through direct integrations with industry-leading subsurface engineering and geophysical software.



Build dynamic, conceptual models that combine geology, geophysics, and subsurface engineering insights.

Get started with the latest release of Leapfrog Energy today.

Leapfrog Energy's features and workflows bring your teams and data together with:



Geological modelling

Rapidly build and analyse robust 3D conceptual models from multidisciplinary data such as GIS, cross-sections, flow, geophysics, geology, wells, and more.



Visualisation

Analyse your data and look for correlations and patterns with simple, intuitive visualisation tools. Share insights across disciplines and help non-technical stakeholders make more informed decisions using 2D and 3D models.



Well planning

Anticipate subsurface permeability and key reservoir conditions by testing and refining a 3D geological model.



Flow Simulation

Quickly create flow simulation models from your geological and numeric models, export them for simulation runs, then import the results back into Leapfrog Energy.



Numeric modelling

Create implicit numeric models from well data such as downhole well logs. These numeric models can then be evaluated on to flow models and block models, with all models linked to dynamically update when data or interpretation changes.



Geostatistics and Calculations

Combine the visual insights from your 3D Leapfrog models with geostatistical insights in a single streamlined, flexible workflow. Methods available include; Ordinary and simple Kriging, Inverse distance weighting, Nearest Neighbour, RBF.



Geophysics

Integrate industry-leading geological and geophysical file formats to build a comprehensive conceptual model of the subsurface.



Sharing and collaboration

Create a continuous workflow between teams to build fast, rapid iterations of conceptual models.

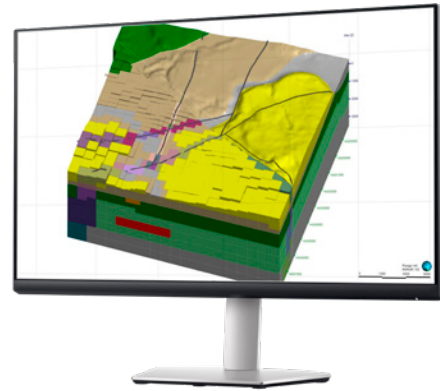
Create movies, share slices, and add annotations to explain your ideas. Use visuals to clearly communicate insights with other teams and non-technical stakeholders, generating crucial conversations and inform smart decision-making.



Collaboration

Extract even more value from your data with a connected ecosystem that brings cloud hosted collaboration, visualisation and data management.

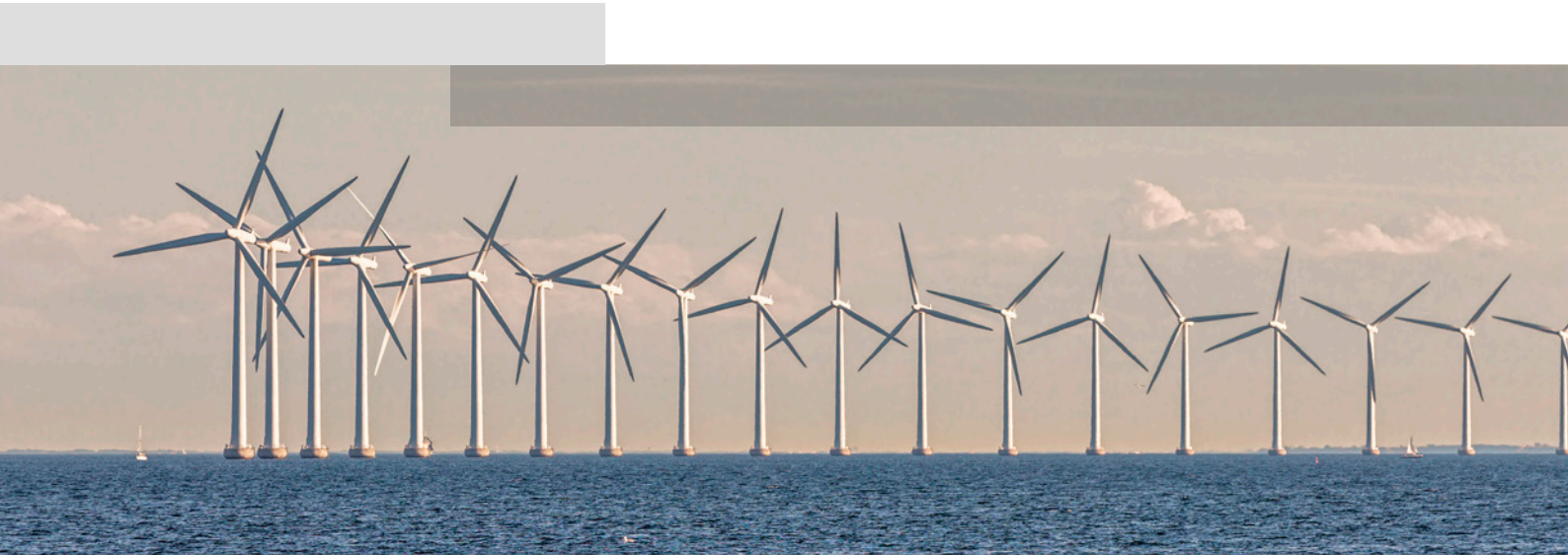
Visualise, track, integrate, and manage your geoscience data from a centralised, auditable environment with Seequent Central



Interoperability

Leapfrog Energy interfaces with industry leading reservoir engineering and geophysical software for rapid interpretation of the subsurface.

Combine all of your subsurface data in one place and utilise outputs from adjacent tools. With flow simulation interfaces (ECLIPSE, TOUGH, MODFLOW, FEFLOW, CMG), Geophysical interoperability for seismic (SEG-Y), magneto-telluric (.MOD and .OUT), UBC and potential fields (Geosoft Voxel) data, well data (Petrel Deviation Files) and geotechnical (gINT, AGS, OpenGround) sources.



A better understanding of the earth
creates a better world for all

seequent.com

Seequent, The Bentley Subsurface Company

ADALTA
SOFTWARE PER L'INNOVAZIONE

Rivenditore Ufficiale per l'Italia

email: commerciale@adalta.it

tel: 0575.333297

www.adalta.it/seequent