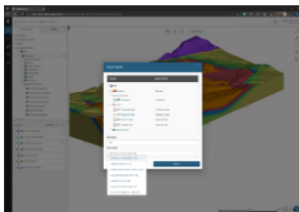




The screenshot shows the C-CENTRAL website. On the left, there is a large image of a tree with the text "C-CENTRAL" overlaid. On the right, there is a dark sidebar with a navigation menu. The menu items are: "Home", "Training and Support", "Resources", "About Us", and "Contact Us". The "Home" item is highlighted with a blue bar. Below the menu, there is a section titled "Downloads" with a link to "Download the C-CENTRAL app".

In this latest release of Seequent Central, ease of access is at the forefront of improvements, with Central now accessible via a single domain –

This change removes the need to navigate to a specific domain for your Central instance. Now, you can choose which Central instance you wish to access during sign-in, and easily switch between instances from within the Central portal. You can also move between other Seequent cloud applications, [Imago](#), [MX Deposit](#), and [OpenGround](#), from within Central via a new menu.



Surfaces can now be exported directly from Central when working in the web browser. With multiple industry data formats supported, you can export the data you need from a project to use in your other applications.